
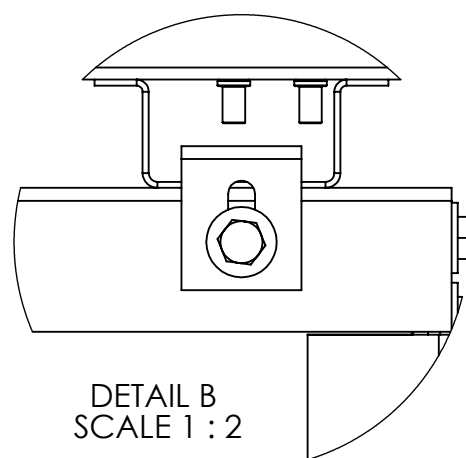
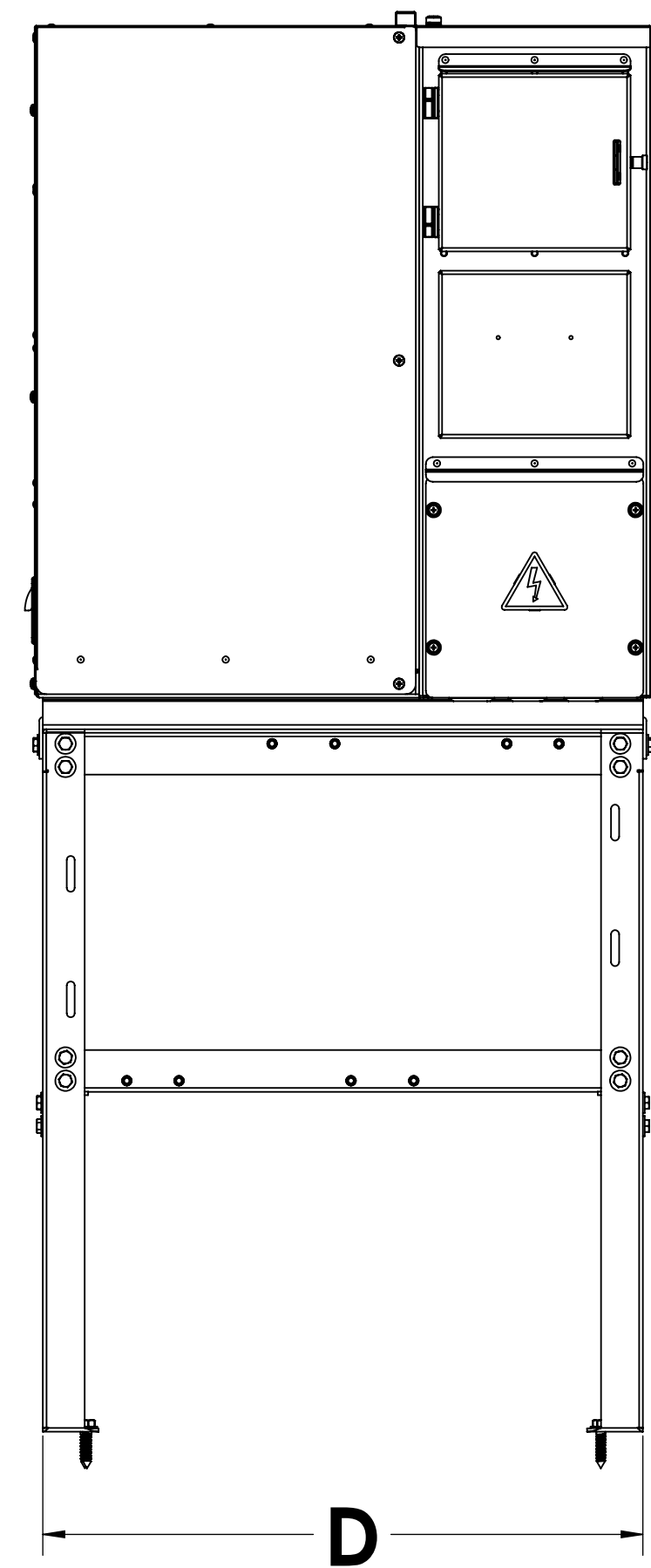
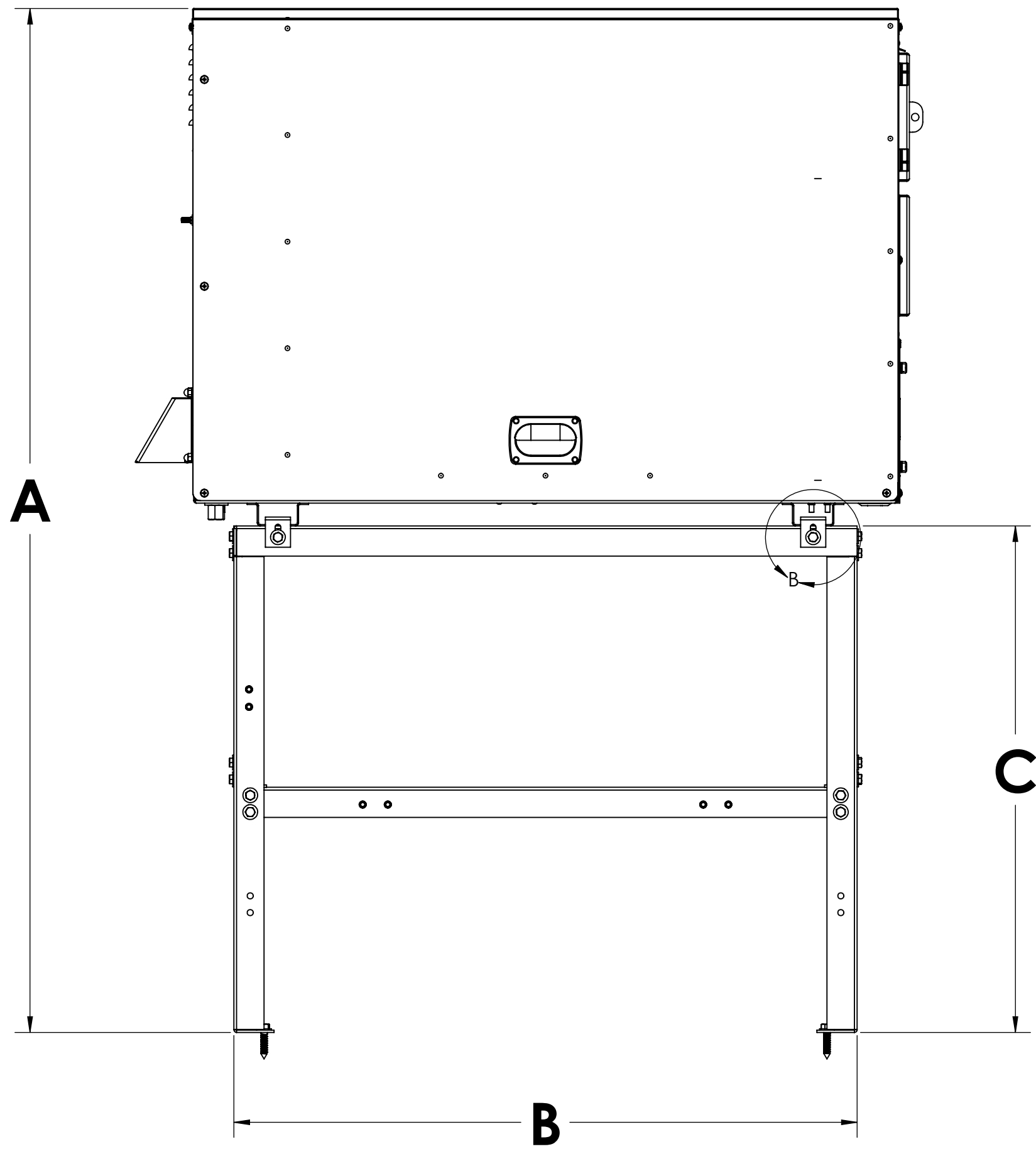


IN (CM)	A	B	C	D	E	F	G	H	I	J	K	L	M
<b>ARP500</b>	13.7 (34.8)	7.5 (19.1)	8.4 (21.3)	25.7 (65.3)	24.6 (62.5)	39.2 (99.6)	35.1 (89.2)	3.3 (8.4)	24.6 (62.5)	21.5 (54.6)	6.4 (16.3)	6.9 (17.5)	22.1 (56.1)
<b>ARP1000/ARP1500</b>	19.3 (49.0)	13.2 (33.5)	8.4 (21.3)	25.7 (65.3)	24.6 (62.5)	39.2 (99.6)	35.1 (89.2)	3.3 (8.4)	24.6 (62.5)	27.1 (68.8)	9.9 (25.1)	6.9 (17.5)	27.8 (70.6)

THE DRAWINGS AND SPECIFICATIONS CONTAINED HEREIN ARE THE PROPERTY OF ATREX ENERGY INC. AND SHALL NOT BE USED, REPRODUCED OR DISTRIBUTED, IN WHOLE OR IN PART, WITHOUT THE EXPRESS PRIOR WRITTEN CONSENT OF A DULY AUTHORIZED REPRESENTATIVE OF ATREX ENERGY.

DIMENSIONS ARE IN INCHES UNLESS OTHERWISE SPECIFIED TOLERANCES ARE:	
FRACTIONS	DECIMALS ANGLES
±1/32	.XX ±.005 ±1/2°
	.XX ±.01
	.X ±.015
SHT MTL: BEND TO FEATURE TOL. ±.015	
APPROVALS	DATE
DRAWN BY: A. VUONG	07/07/16
APPROVED BY: M. BROWN	07/07/16
CAD GENERATED	THIRD ANGLE PROJECTION
DRAWING, DO NOT MANUALLY UPDATE	

		19 WALPOLE PARK S. WALPOLE, MA 02081	
ASSY	N/A		
PART	ARP SERIES DIMENSIONS		
SIZE	C	DWG. NO.	FM328A
SCALE	1:6	DO NOT SCALE DRAWING	REV. 01
		SHEET 1 OF 3	

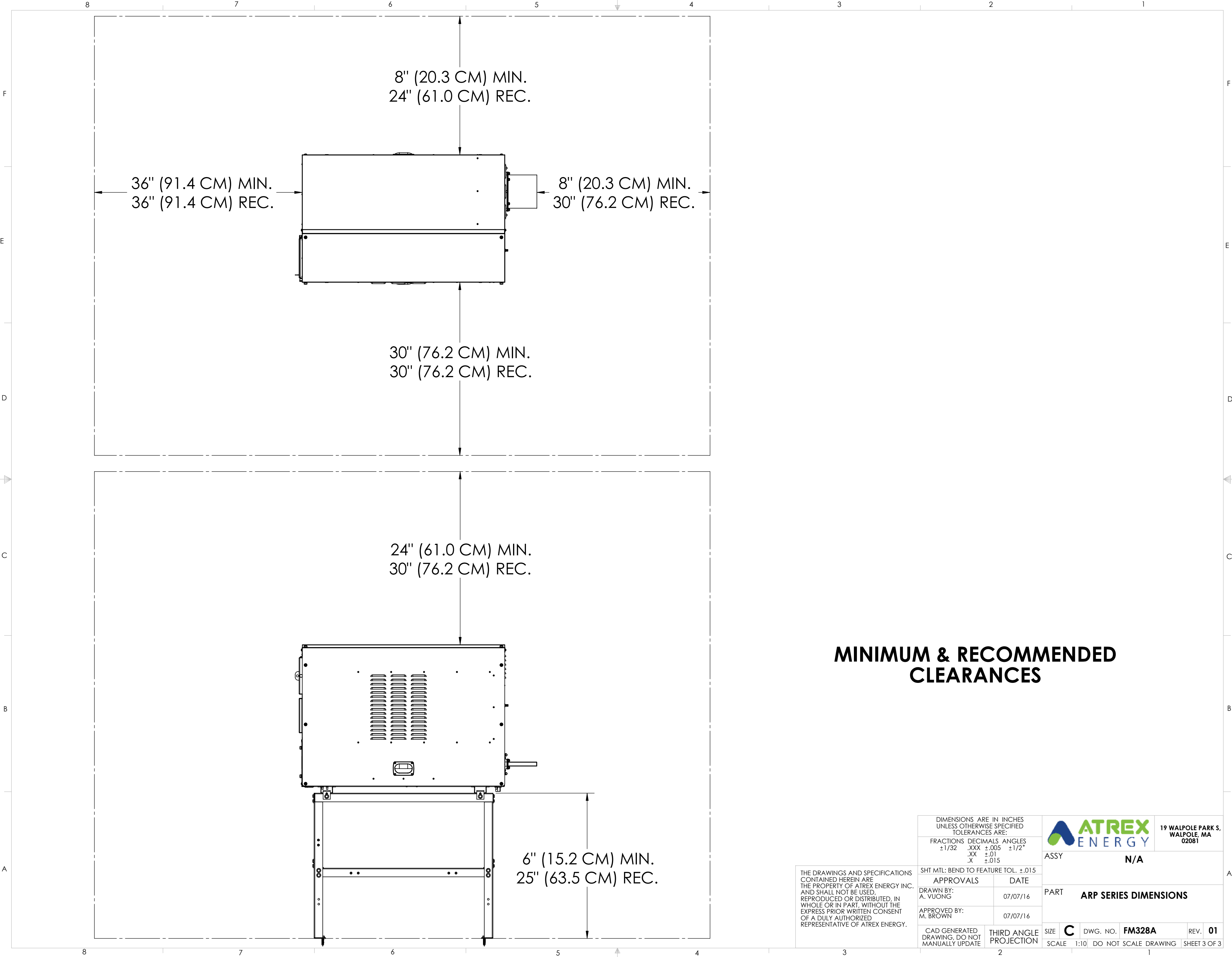


IN (CM)	A	B	C	D
<b>ARP500</b>	50.9 (129.3)	31.0 (78.7)	25.2 (64.0)	21.5 (54.6)
<b>ARP1000/ARP1500</b>	50.9 (129.3)	31.0 (78.7)	25.2 (64.0)	27.2 (69.1)

THE DRAWINGS AND SPECIFICATIONS CONTAINED HEREIN ARE THE PROPERTY OF ATREX ENERGY INC. AND SHALL NOT BE USED, REPRODUCED OR DISTRIBUTED, IN WHOLE OR IN PART, WITHOUT THE EXPRESS PRIOR WRITTEN CONSENT OF A DULY AUTHORIZED REPRESENTATIVE OF ATREX ENERGY.

DIMENSIONS ARE IN INCHES UNLESS OTHERWISE SPECIFIED TOLERANCES ARE:	
FRACTIONS	DECIMALS ANGLES
±1/32	.XXX ±.005 ±1/2°
	.XX ±.01
	.X ±.015
SHT MTL: BEND TO FEATURE TOL. ±.015	
APPROVALS	DATE
DRAWN BY: A. VUONG	07/07/16
APPROVED BY: M. BROWN	07/07/16
CAD GENERATED DRAWING, DO NOT MANUALLY UPDATE	THIRD ANGLE PROJECTION

		19 WALPOLE PARK S. WALPOLE, MA 02081	
ASSY	N/A		
PART	ARP SERIES DIMENSIONS		
SIZE	C	DWG. NO.	FM328A
SCALE	1:6	DO NOT SCALE DRAWING	REV. 01
		SHEET 2 OF 3	



8" (20.3 CM) MIN.  
24" (61.0 CM) REC.

36" (91.4 CM) MIN.  
36" (91.4 CM) REC.

8" (20.3 CM) MIN.  
30" (76.2 CM) REC.


30" (76.2 CM) MIN.  
30" (76.2 CM) REC.

24" (61.0 CM) MIN.  
30" (76.2 CM) REC.

6" (15.2 CM) MIN.  
25" (63.5 CM) REC.

## MINIMUM & RECOMMENDED CLEARANCES

THE DRAWINGS AND SPECIFICATIONS CONTAINED HEREIN ARE THE PROPERTY OF ATREX ENERGY INC. AND SHALL NOT BE USED, REPRODUCED OR DISTRIBUTED, IN WHOLE OR IN PART, WITHOUT THE EXPRESS PRIOR WRITTEN CONSENT OF A DULY AUTHORIZED REPRESENTATIVE OF ATREX ENERGY.

DIMENSIONS ARE IN INCHES UNLESS OTHERWISE SPECIFIED TOLERANCES ARE:				19 WALPOLE PARK S. WALPOLE, MA 02081	
FRACTIONS	DECIMALS	ANGLES	ASSY <b>N/A</b>		
±1/32	.XXX ±.005	±1/2°	PART <b>ARP SERIES DIMENSIONS</b>		
	.XX ±.01		SHT MTL: BEND TO FEATURE TOL. ±.015		
	.X ±.015		APPROVALS      DATE		
DRAWN BY: A. VUONG		07/07/16			
APPROVED BY: M. BROWN		07/07/16			
CAD GENERATED DRAWING, DO NOT MANUALLY UPDATE	THIRD ANGLE PROJECTION	SIZE <b>C</b>	DWG. NO. <b>FM328A</b>	REV. <b>01</b>	
SCALE 1:10		DO NOT SCALE DRAWING		SHEET 3 OF 3	